



Corporate Parenting Report

September 2013

**Children Looked After
Children Subject to a Child Protection Plan**

(Activity to end of September 2013)

CONTENTS

PART A: PERFORMANCE INFORMATION	3
A1) KEY PERFORMANCE INDICATORS	3
Part B:	
B1) NUMBERS OF CLA & CPP	5
PART C: CHILDREN LOOKED AFTER (CLA)	6
C1) AGE GROUPS	6
C2) GENDER	7
C3) ETHNICITY	8
C4) PLACEMENT TYPE	9
C5) CLA EDUCATION	10
PART D: CHILDREN SUBJECT TO A CHILD PROTECTION PLAN (CPP)	11
D1) AGE GROUPS	11
D2) ETHNICITY	12
D3) GENDER	13
D4) CATEGORY OF ABUSE.....	14
D5) DURATION OF PLAN.....	15





Part A– Key Performance Indicators

PI Ref	PI Description	Harrow 11/12 (%)	Comparators averages 2011-12 (%)	Harrow 12/13 (%)	Q1 13/14 (%)	Q2 13/14 (%)
NI 60	Timeliness of Assessments (% complete in 45 working days) - YTD	New Indicator			87.7	84
NI 64	Ceased CPP that lasted 2 or more years (%)	17.9	Statistical Neighbours - 9.2 England - 5.6	11.2	0	4.3
NI 65	CPP for 2nd or subsequent time (within 2 yrs of last plan) (%)	New Indicator			4.2	6.7
NI 67	Timeliness of CPP reviews (%)	100	Statistical Neighbours - 98.5 England - 96.7	100	100	100
NI 62	CLA placement stability: number of moves (% with 2+ moves)	17	Statistical Neighbours - 11 England - 11	15.5	0.5	2.73
NI 63	CLA placement stability: length of placement (%)	71.4	Statistical Neighbours - 68 England - 68	52.9	50	57.9
Local	% of new CLA where health assessment has been completed within 28 working days (month on month)	New Local Indicator			25	0
Local	% of CLA with up to date Dental Checks (CLA 1 yr +)	96.2	Local Indicator	93.8	82	82.4
Local	% of CLA with up to date Health Checks (CLA 1 yr +)	88.6	Local Indicator	91.4	91	77.3
Local	% of sessions (all CLA) absent from school (% of sessions missed) *	15.6	Local Indicator	14.3	8.3	Start of new academic year

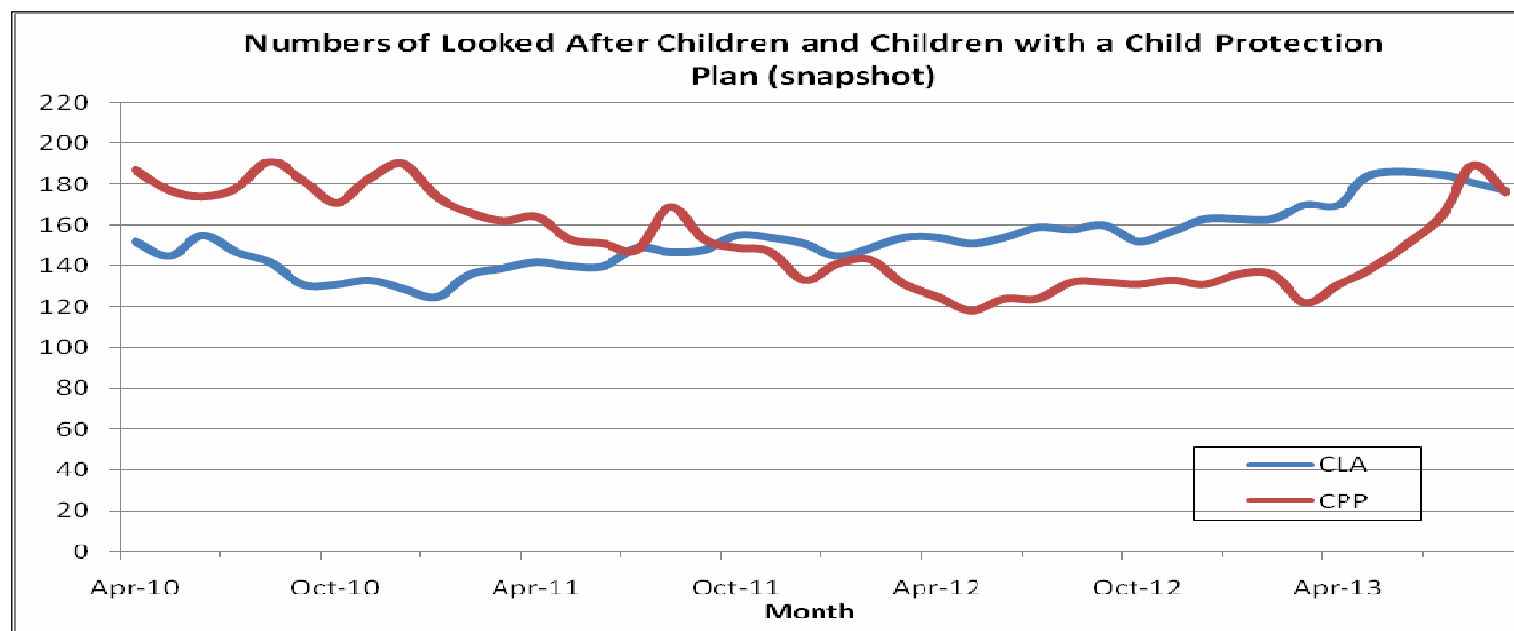
PI Ref	PI Description	Harrow 11/12 (%)	Comparators averages 2011-12 (%)	Harrow 12/13 (%)	Q1 13/14 (%)	Q2 13/14 (%)
Local	% of school age CLA (all CLA) fixed-term excluded this year (Sept to date)			18.5	11.7	Start of new academic year
Local	% of school age CLA (all CLA) permanently excluded this year (Sept to date) ^{n *}		Local Indicator	0	1.9	Start of new academic year
New	% of Care Leavers age 19 in suitable accommodation		New Indicator - definition has changed - NI 147 looked at a cohort of care leavers aged 19 who were looked after on 1st April aged 16, The revised indicator looks at all eligible care leavers aged 19, Our performance for the previous indicator for 2012-13 was 80% of the cohort were in suitable accommodation , England average was 88%		91.7	88.5
New	% of Care Leavers age 20 in suitable accommodation		New Indicator		85.7	94.1
New	% of Care Leavers age 21 in suitable accommodation		New Indicator		60	76.9
New	% of Care Leavers aged 19 not in education, employment or training (NEET)		New Indicator - definition has changed - NI 148 looked at a cohort of care leavers aged 19 who were looked after on 1st April aged 16, The revised indicator looks at all eligible care leavers aged 19. Our performance for the previous indicator for 2012-13 was 54% of the cohort were NEET , England average was 34%		16.7	23.1
New	% of Care Leavers aged 20 not in education, employment or training		New Indicator		44.4	23.5
New	% of Care Leavers aged 21 not in education, employment or training		New Indicator		60	57.1

* Statistical Neighbours – Barnet, Croydon, Ealing, Enfield, Hillingdon, Hounslow, Kingston Upon Thames, Merton, Redbridge, Slough

** Education Indicators are measured in academic years

	Dark Green represents top quartile (best 25%)
	Light Green represents third quartile.
	Amber represents the second quartile.
	Red represents the bottom quartile (worst 25%)

Part B –Numbers of CLA and CPP over time

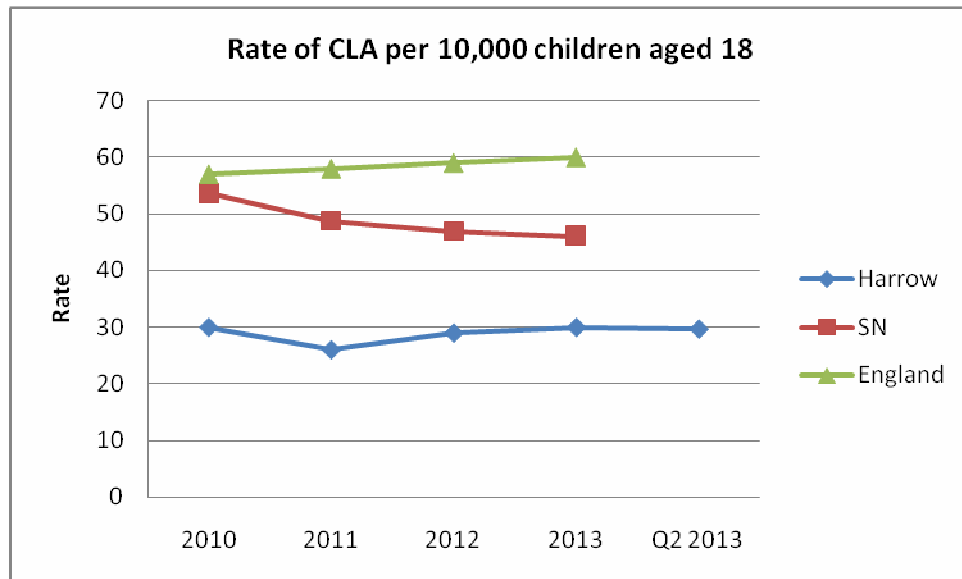


CPP numbers have risen significantly in 2013-14 to the current level of 179. The rise which corresponds with a lowering of thresholds, gives a rate of 31.9 per 10,000, which brings Harrow closer to comparator rates.

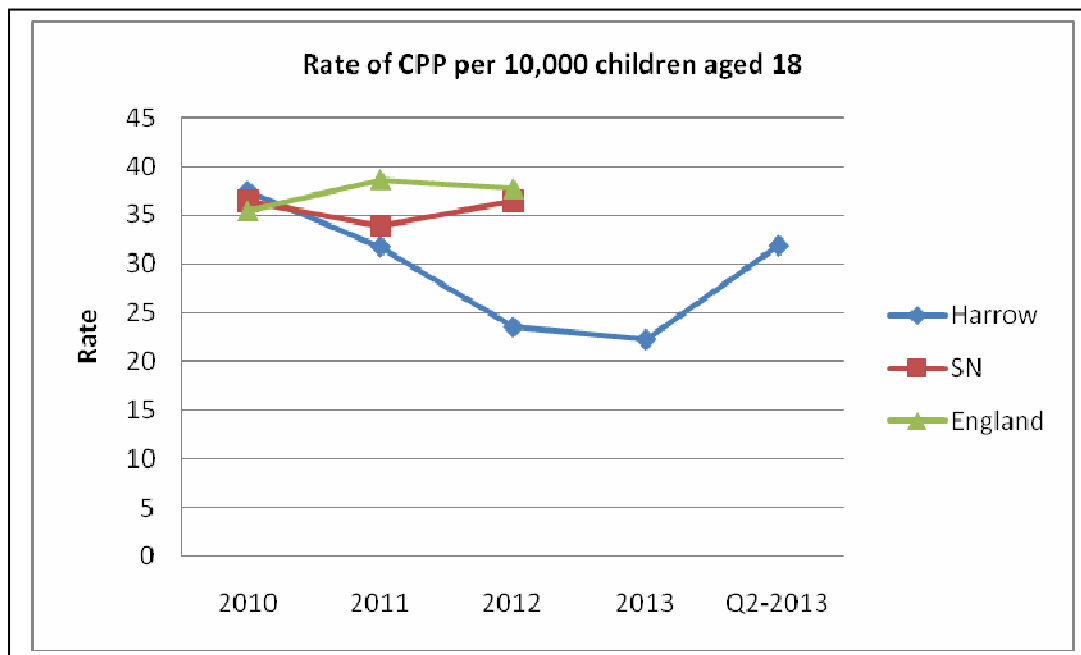
CLA numbers have also risen to 164. Harrow continues to have a significantly lower rate of CLA than comparators, Further analysis of the statistical neighbours group shows that Merton and Redbridge have similar rates. The average is pulled up by Croydon Hillingdon and Hounslow which have high numbers of CLA.

Comparator Info: Rates per 10,000 population

	London	England	Harrow	Harrow latest Q2 13-14
CPP (2012)	35.7	37.8	23.6	31.9
CLA (2013)	55	60	30	29.7



CLA at 31 March 2013	CLA numbers	Rates per 10000 population
Redbridge	205	28.0
Harrow	170	30.0
Merton	140	32.0
Barnet	310	37.0
Enfield	300	37.0
Kingston upon Thames	130	37.0
Slough	180	48.0
Ealing	400	51.0
Hounslow	305	52.0
Hillingdon	365	56.0
Croydon	735	82.0
Statistical Neighbours		46.0
England		60.0

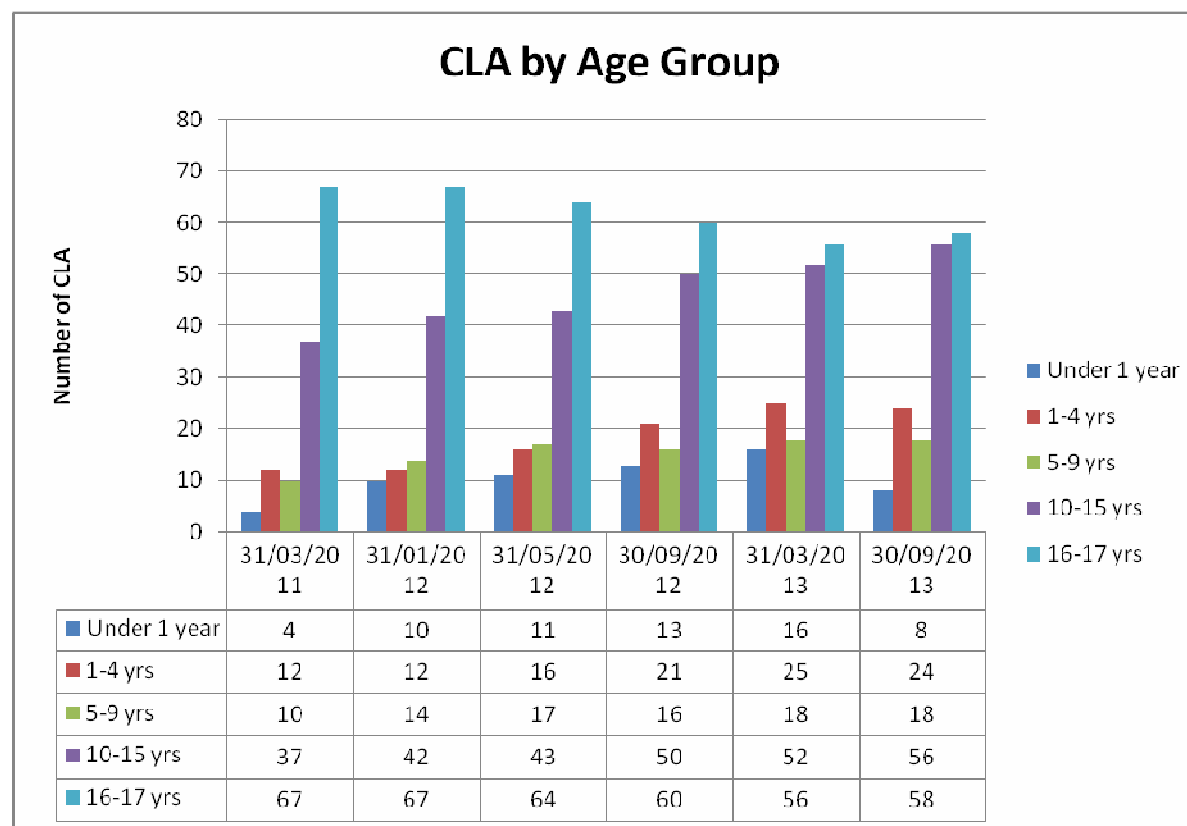


CPP at 31 March 2012 (2013 not yet published)	CPP numbers	Rates per 10000 population
Redbridge	141	19.9
Harrow	129	23.6
Kingston upon Thames	91	26.9
Enfield	234	29.7
Barnet	258	31.0
Croydon	288	32.3
Hounslow	216	37.5
Ealing	290	37.8
Merton	173	39.8
Hillingdon	346	53.7
Slough	209	55.9
Statistical Neighbours		36.5
England		37.8

Part C: Children Looked After (CLA)

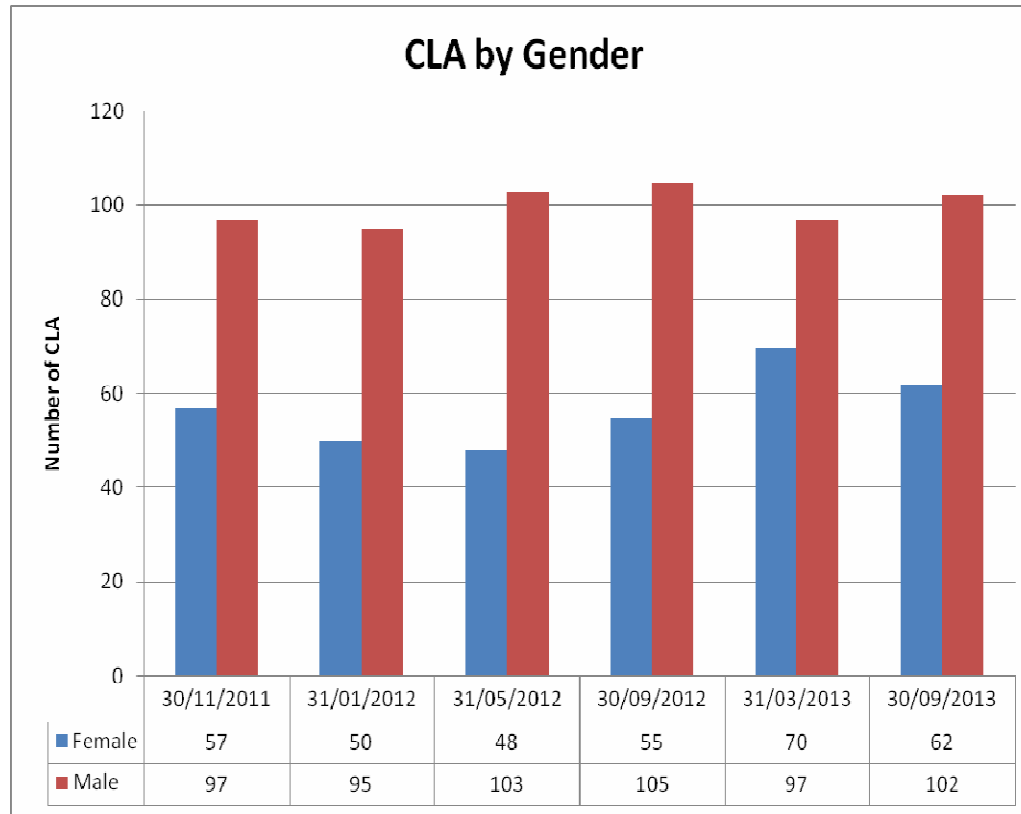
Two thirds of our CLA population falls in 10 -17 years age group. The number of CLA 10-15 years has been rising but we are still below statistical neighbours .
The proportion of 16-17 year olds is broadly now in line with statistical neighbours. Increases in numbers of younger CLA has also brought these age groups into line with comparators. We want to ensure that we are enabling CLA to have permanent care arrangements wherever possible and that may be adoption, guardianship, residence or long term fostering. We need to analyse the throughput of our CLA figures to understand where we are.

C1



Comparator Information for percentages of age of CLA at 31st March 2012 (Source: SSDA903)	Age at 31 March 2012 (years) (%)				
	Under 1	1 to 4	5 to 9	10 to 15	16 -17
England	6	19	19	36	20
London	6	14	16	37	27
Statistical neighbours Average	6	14	15	35	30
Harrow 2012 (Numbers)	8% (15)	8%(15)	11%(15)	29%(45)	43%(70)
Harrow Q2 2013-14 (latest)	5%	15 %	11%	34%	35%

C2 – Gender



Comparator info CLA by gender 31.3.2012

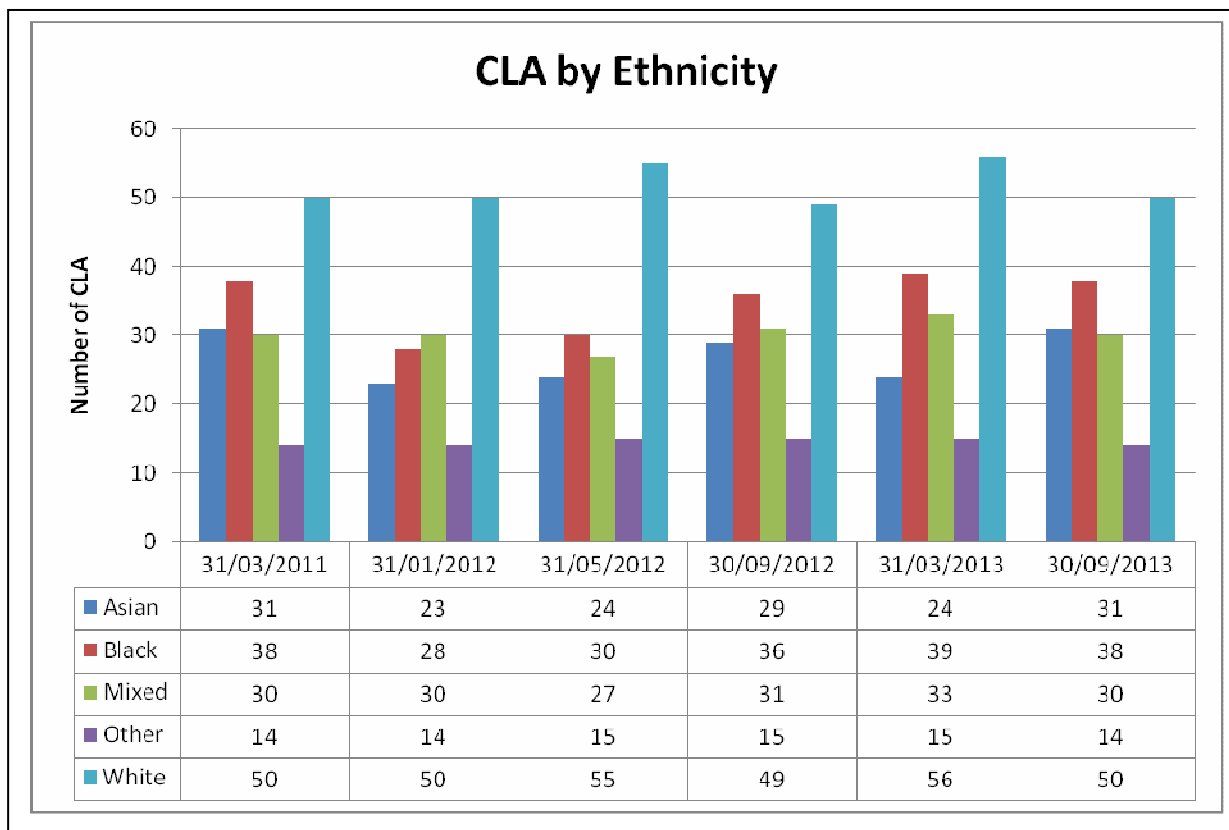
Source: SSDA903

	Gender	
	Male	Female
<i>England</i>	55	45
<i>London</i>	56	44
<i>Statistical neighbours Average</i>	58	42
<i>Harrow</i>	68% (105)	32% (50)
Harrow Q2 2013-14 (latest)	62%	38%

Harrow historically has a higher proportion of males who are looked after. However, the proportion of CLA who were female has increased to 38% at 30th Sept and more in line with comparators

C3 - Ethnicity

Harrow CLA ethnicity over time



At Q2 there is an increase in numbers of CLA from Asian backgrounds, and a reduction in those from White backgrounds.

The representation of children and young people from Mixed or Black backgrounds in Harrow's care population is higher than amongst the general population. This trend is also seen amongst Harrow's statistical neighbours.

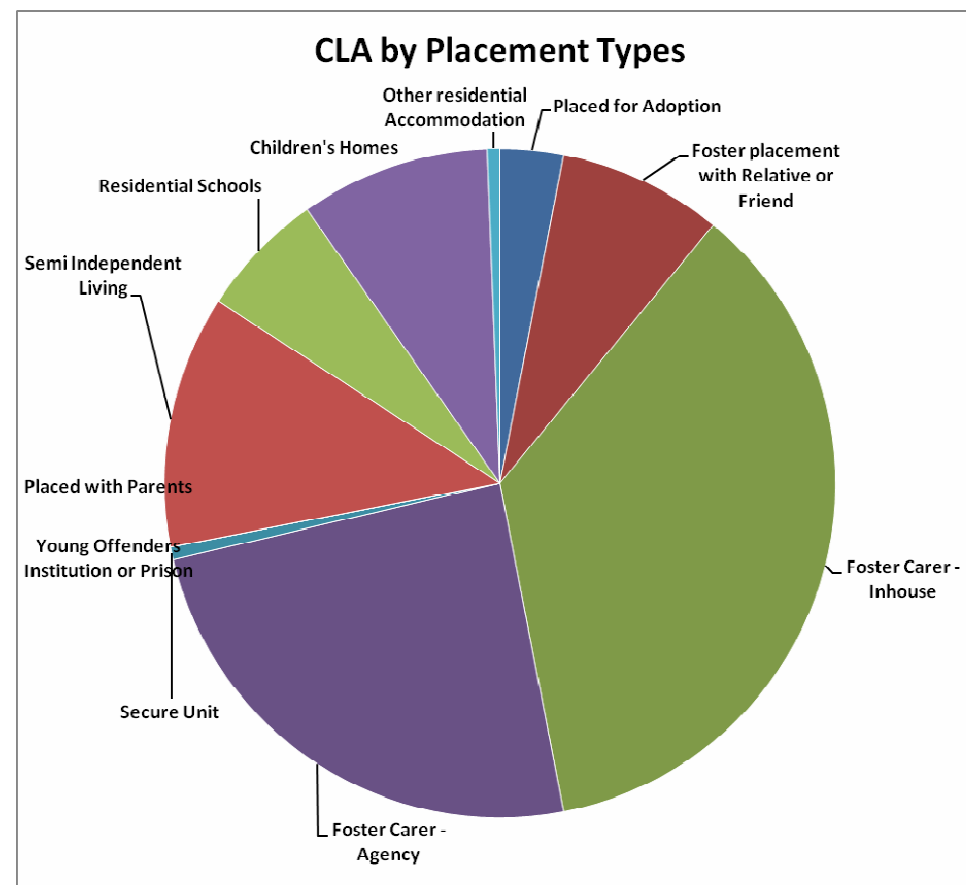
Comparator Information on Ethnicity at 31.03.2012 (%)

Source: SSDA903

	White	Mixed	Asian or Asian British	Black or Black British	Other Ethnic Groups
Statistical Neighbour	46	15	16	20	6
England	78	9	4	7	3
Harrow	34	18	15	23	10
Harrow Q2 Latest	30	18	19	23	9

C4 – Placement Type Harrow Placement Detail 30th September 2013

Placement Type	Feb-13	Sep-13	Change
Placed for Adoption	5	5	0
Foster placement with Relative or Friend	5	13	8
Foster Carer - Inhouse	65	59	-6
Foster Carer - Agency	31	40	9
Secure Unit	1	1	0
Young Offenders Institution or Prison	1	0	-1
Placed with Parents	3	0	-3
Semi Independent Living	24	20	-4
Residential Schools	10	10	0
Children's Homes	11	15	4
Other residential Accommodation	4	1	-3
Missing from Placement	0	0	0
Grand Total	160	164	4



Overall all types of foster care placements (68%) are now in line with statistical neighbours and England averages of around 72%.

Action is being taken to improve both short and long term placement stability. The Divisional Director has set up a Panel and will be chairing to gate keep & scrutinise all placement moves for authorisation before they are implemented. The service is focusing on providing improved placement options and improved support / early intervention.

Percentage of children looked after at 31 March 2012, by placement	Harrow		London	England
	Number	%	%	%
Foster placements	95	62	74	75
Placed for adoption	1	1	3	4
Placement with parents	0	0	2	5
Other placement in the community	25	17	6	3
Secure units, children's homes and hostels	15	11	10	9
Other residential settings	3	2	2	2
Residential schools	10	7	2	1

C5 – CLA Education Data

*note that DfE indicators are standardised by including only CLA who have been looked after for more than one year

CLA educational attainment trends

CLA looked after for over a year at 31/03/13	2011	2012	2013 (provisional)
Total children in KS2 cohort:	2	2	3
Attained at least Level 4 in Maths at end of KS2	50%	0%	67%
Attained at least Level 4 in English at end of KS2	0%	0%	67%
Attained at least Level 4 in both English and Maths	0%	0%	67%
Total young people in GCSE cohort:	19	13	12
GCSE: Attained at least 1 A* - G	47.4%	46.2%	33.3%
GCSE: Attained 5 or more A* - G	31.6%	23.1%	16.7%
GCSE: Attained 5 or more A* - C	5.3%	0%	8.3%
GCSE: Attained 5 or more A* - C inc Eng. & Maths	5.3%	0%	8.3%

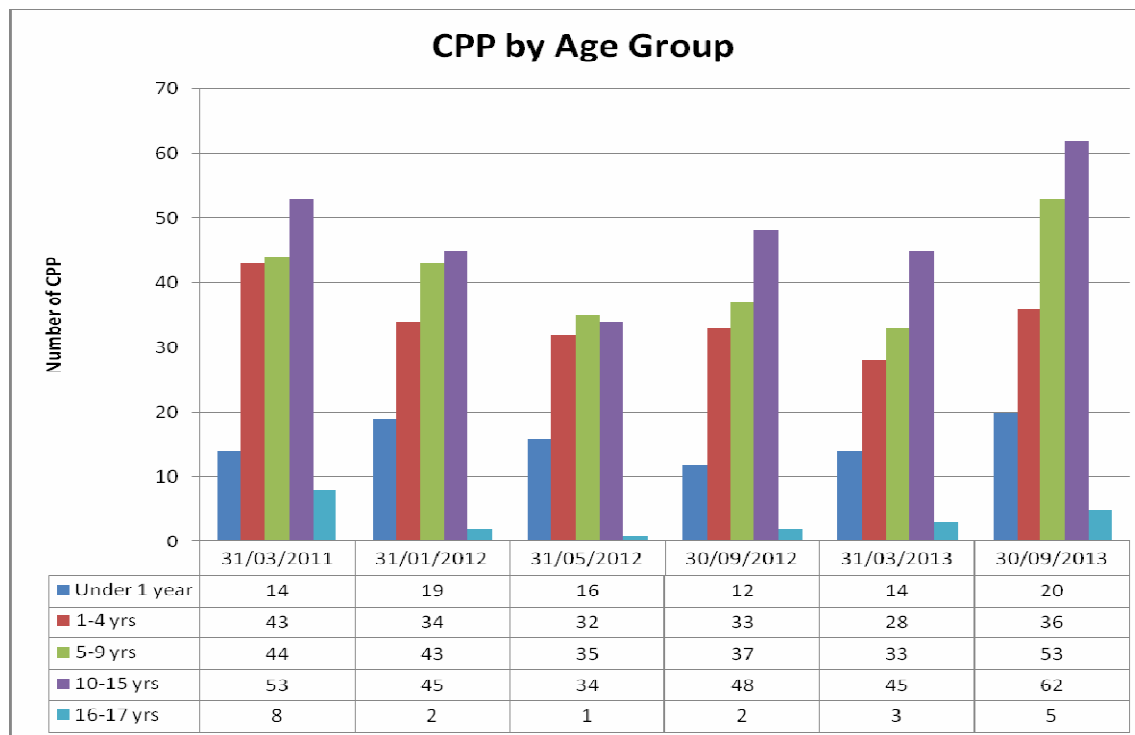
Detail for 2013 GCSEs:

	TOTAL IN COHORT	GCSE ONLY					GCSE & Equiv.	
		Sat GCSE Exams?	1 A*-G	5 A*-G	5* A-C	5* A-C inc Eng Math	5* A-C	5* A-C inc Eng Math
All CLA	23	13	13	8	3	3	3	3
%	-	56.5%	56.5%	34.8%	13.0%	13.0%	13.0%	13.0%
All CLA (1 YR+)	12	4	4	2	1	1	1	1
%	-	33.3%	33.3%	16.7%	8.3%	8.3%	8.3%	8.3%

Part D: Children Subject to a Child Protection Plan (CPP)

Children are made the subject of a child protection plan (CPP) when they are considered to be at risk of physical, sexual, emotional harm or neglect. Overall Harrow has seen a decrease in the number of children with a CPP. At 31st March 2013, 123 children had a Child Protection Plan, this has risen to 176 at 30th Sept.

D1 - CPP by Age

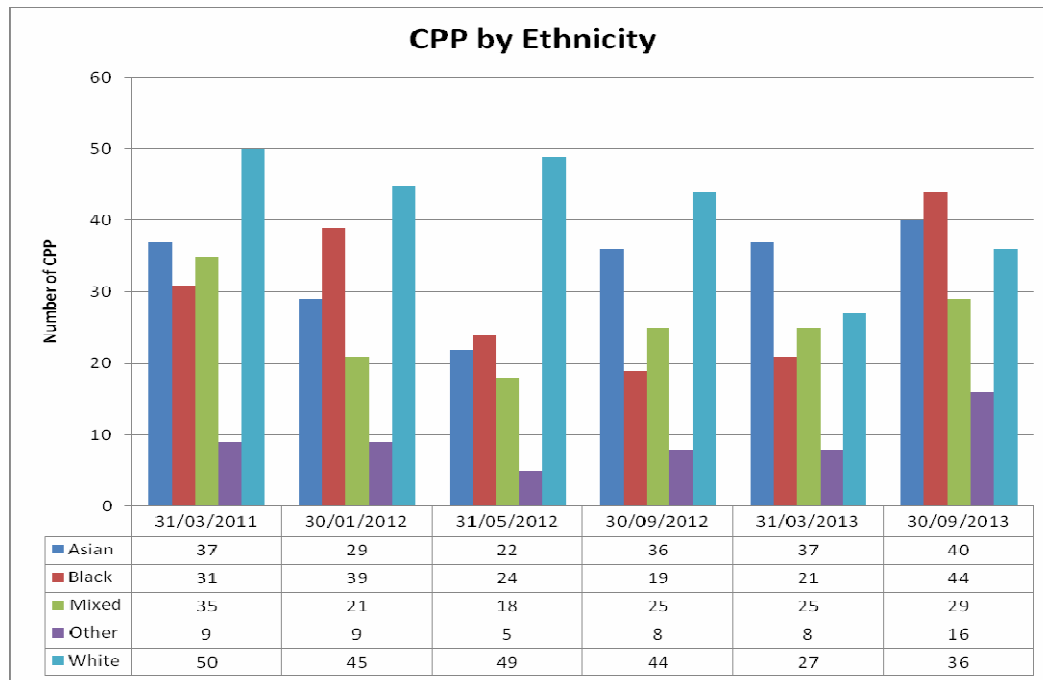


We have a higher proportion of children with CP plans in the 10 – 15 years age group, similar to children looked after.

Comparator Info CPP by age group (%) 31.3.2011

	Under 1	1-4 years	5-9 years	10-15 years	16 & over
England	13.4	30.5	28.5	25.2	2.2
London	13.2	29.4	29.3	26.4	1.9
Harrow	13.2	24.8	27.9	33.3	0.8
Harrow Q2	11.4	20.5	13.1	35.2	2.3

D2 - CPP by Ethnicity



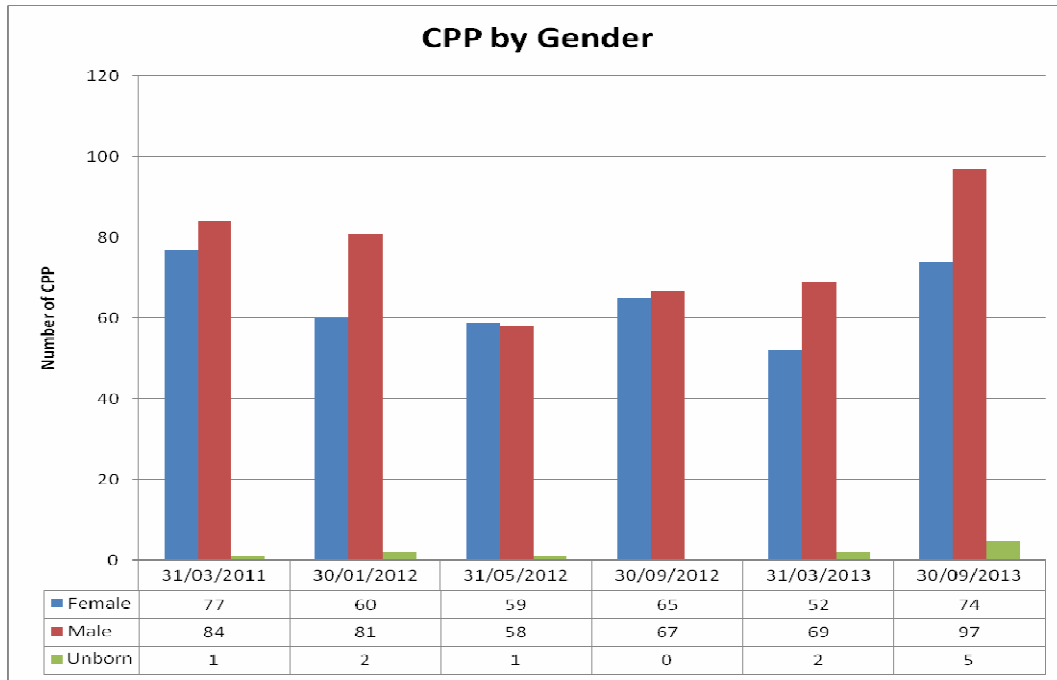
Comparator Information Ethnicity of Children subject to Child Protection Plans at 31st March 2012 (%)

Source: Cin Census

	White	Mixed	Asian or Asian British	Black or Black British	Other Ethnic Groups	Refused / Unknown
London	45.1	15.3	12.2	21.6	2.8	3
England	75.9	7.9	5.4	4.9	1.2	4.6
Harrow	34.1	14	25.6	24	2.3	0
Harrow Q2	20	16	23	25	9	6

At Q2 there was an increase for all groups but a bigger increase for Black children having a CP Plan. Proportions of children with plans with Black and Mixed ethnicity are higher than would be expected compared with the general population - this trend is also seen across London.

D3 - CPP by gender



The gender of Harrow children with Child Protection plans is similar to London & England averages.

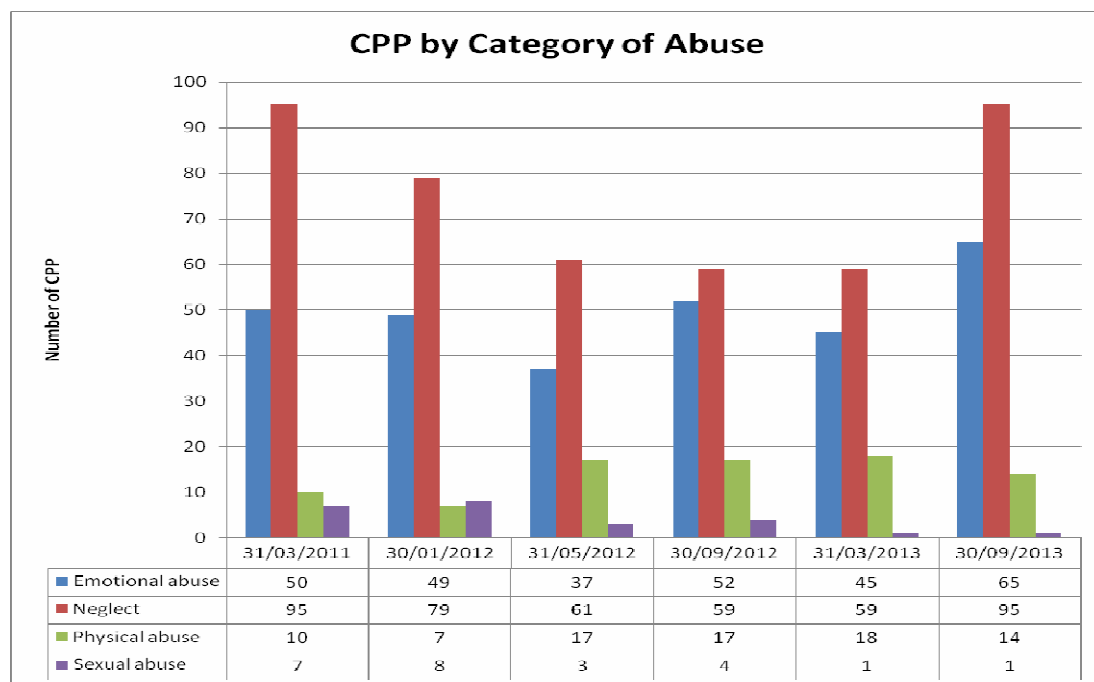
There is a slight increase in the number of unborn children with CP plans at the end of Sept.

Comparator information for age groups & gender of children with Child Protection plans at 31st March 2012(%)
 Source: CiN Census

	Male	Female	Unborn/ Unknown
England	50	48	2
London	49.1	48.4	2.5
Harrow	51.2	47.3	1.5
Harrow Q2	55.1	42	2.8

D4 - CPP by Category of Abuse

Harrow had a high number of children requiring a plan under the category of neglect. Harrow tends to record primary types of abuse as one of the four categories rather than recording 'multiple' e.g. emotional abuse may be present in all types of abuse.



Recent increases in plans have mostly in the categories of neglect and emotional abuse. This follows a decline in numbers of plans due to neglect between 2011 and early 2013, corresponding with an overall reduction as a long term plans were ended.

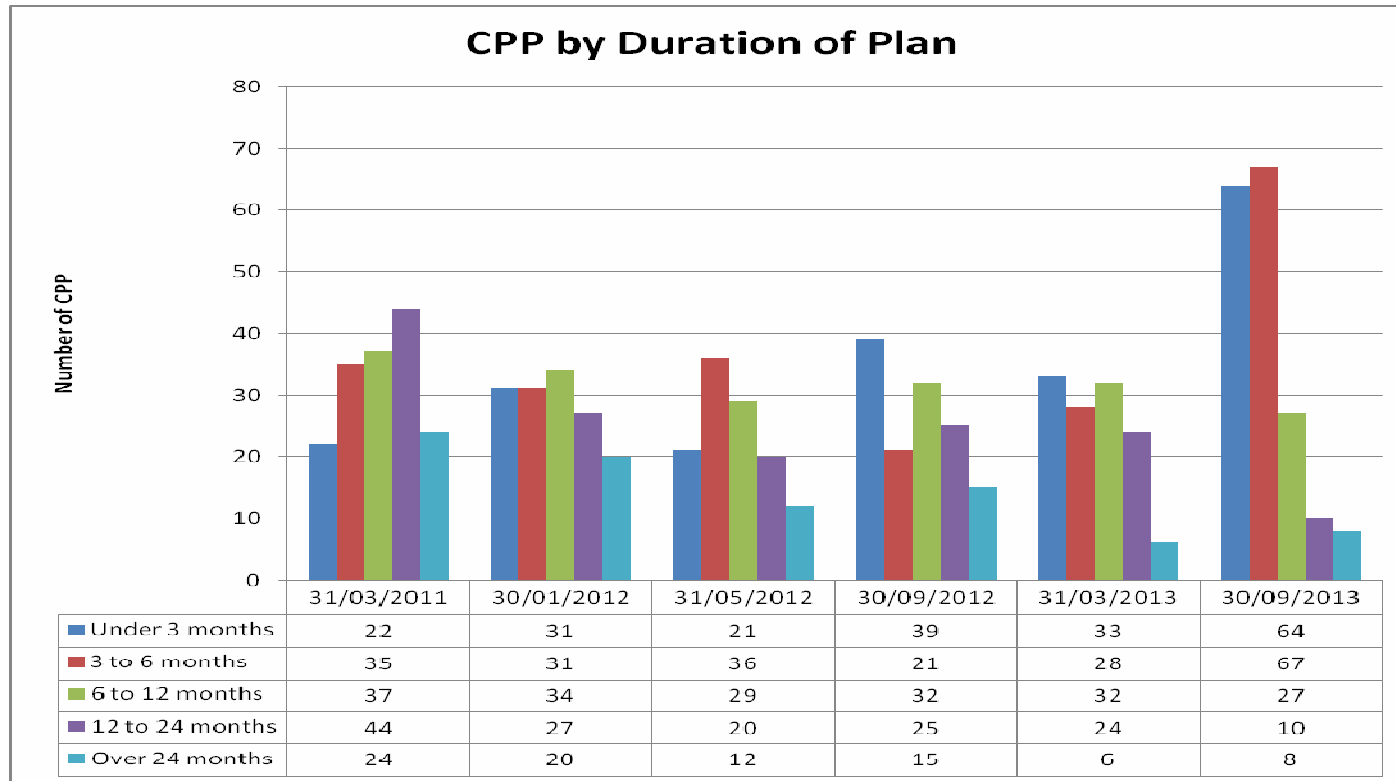
At 30th Sept. 2013, 54% of children had a plan due to concerns about neglect compared to 60% at 31st March 2011. The proportion due to emotional abuse had risen to 37%, compared with 30% in 2011.

Comparator Info - Category of CPP at 31st March 2012 (%)

	Neglect	Physical Abuse	Sexual Abuse	Emotional Abuse	Multiple
England	42.9	10.1	5	30.9	10.9
London	41.9	8.7	2.6	33.9	11.9
Harrow	55.8	15.5	5.4	23.3	0
Harrow Q2	53.8	7.9	0.6	36.9	0

Source: CiN Census

D5 - CPP by duration of plan



Comparator Info – CPP duration at 31st March 2012

(%)

Source: CiN Census

	3 months or less	3 - 6 months	6 - 12 Months	1 - 2 years	2 years and over
England	28.6	23.4	27.3	17.2	3.6
London	28.9	20.9	26.3	18.3	5.6
Harrow	33	9.3	29.5	19.4	9.3
Harrow Q2	36.4	38.1	15.3	5.7	4.5

Co-ordinated work has taken place to progress and end plans in a timely manner, meaning that the numbers of plans lasting over 12 months have reduced.

The number of plans under 6 months has increased sharply due to the increase in numbers of Child Protection plans in recent months.